

Cathode air blower  
**FC-8040**



Pressure Type

Built-in use

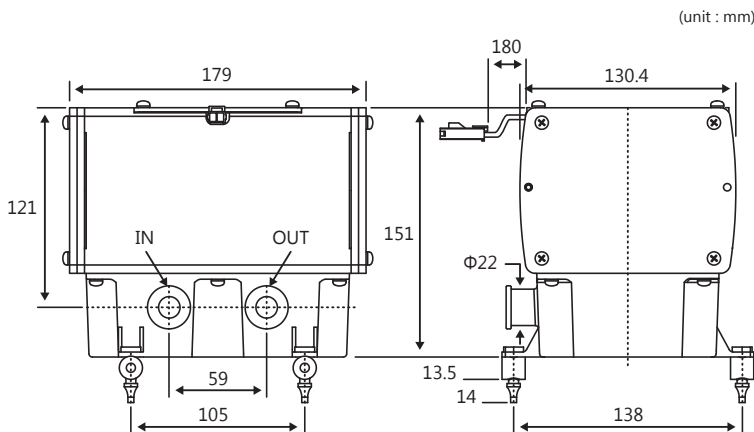
\*No power plug included because it is designed for built-in use.

\*Rubber-made legs are sharp-pointed. Not for self-standing installation.

Applications

- Fuel cell system

Dimensions



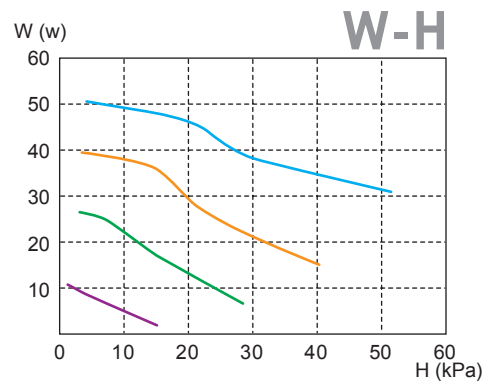
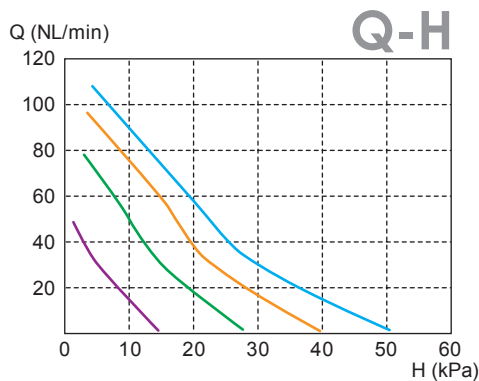
Specifications

Fluid	AIR	
Rated voltage	AC17V	
Frequency	50Hz	
	<PRESSURE>	<AIRFLOW>
Rated operating cond.	12kPa (120mbar)	50NL/min
Max operating cond.	15kPa (150mbar)	60NL/min
Min operating cond.	3kPa (30mbar)	20NL/min
Power consumption	26W <sup>(*)</sup>	
Noise level	42dBA or less <sup>(*)</sup>	
Size	3.4L <sup>(*)</sup>	
Weight	5.6kg <sup>(*)</sup>	

\*1: Without AIRTRONICS control driver.

\*2: With AIRTRONICS control driver.

Performance Curve



Control voltage

- 5V
- 4V
- 3V
- 2V

\* Performance curves mentioned above are reference values by operation with Airtronics control driver.

\* All characteristics values are only for reference, and are not guaranteed values.  
\* Note that the operating temperature for our pumps is 41°F(5°C) to 104°F(40°C).